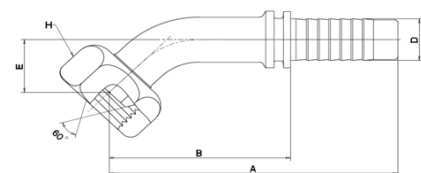


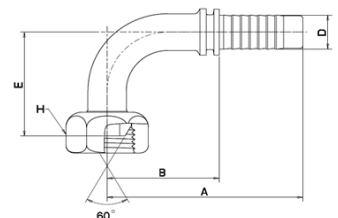
**Female BSP - 60° Cone - Straight**

PROD NR	DESCRIPTION	THREAD	D	A	B	H
7125-10000	4EX4FBSPPX	G 1/4" - 19 BSP	-04	46,0	18,0	19,0
7125-10001	4EX6FBSPPX	G 3/8" - 19 BSP	-04	50,5	22,5	22,0
7125-10002	6EX6FBSPPX	G 3/8" - 19 BSP	-06	52,0	22,0	22,0
7125-10003	6EX8FBSPPX	G 1/2" - 14 BSP	-06	52,5	22,5	27,0
7125-10004	8EX8FBSPPX	G 1/2" - 14 BSP	-08	55,0	23,0	27,0
7125-10005	10EX10FBSPPX	G 5/8" - 14 BSP	-10	54,5	20,0	28,0
7125-10006	12EX12FBSPPX	G 3/4" - 14 BSP	-12	62,5	23,0	32,0
7125-10007	16EX16FBSPPX	G 1" - 11 BSP	-16	79,0	25,5	38,0



**Female BSP - 60° Cone - 45° Elbow**

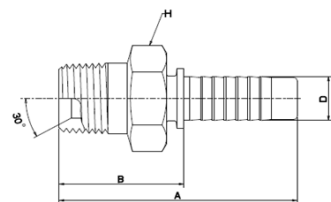
PROD NR	DESCRIPTION	THREAD	D	A	B	E	H
7125-10008	4EX4FBSPPX45	G 1/4" - 19 BSP	-04	68,0	40,0	17,0	19,0
7125-10009	4EX6FBSPPX45	G 3/8" - 19 BSP	-04	71,0	43,0	20,0	22,0
7125-10010	6EX6FBSPPX45	G 3/8" - 19 BSP	-06	85,0	55,0	20,0	22,0
7125-10011	6EX8FBSPPX45	G 1/2" - 14 BSP	-06	88,0	58,0	23,0	27,0
7125-10012	8EX8FBSPPX45	G 1/2" - 14 BSP	-08	97,0	65,0	23,0	27,0
7125-10013	10EX10FBSPPX45	G 5/8" - 14 BSP	-10	98,5	64,0	25,0	28,0
7125-10014	12EX12FBSPPX45	G 3/4" - 14 BSP	-12	102,5	63,0	29,0	32,0
7125-10015	16EX16FBSPPX45	G 1" - 11 BSP	-16	143,5	90,0	41,0	38,0



**Female BSP - 60° Cone - 90° Elbow**

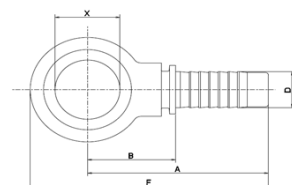
PROD NR	DESCRIPTION	THREAD	D	A	B	E	H
7125-10016	4EX4FBSPPX90	G 1/4" - 19 BSP	-04	52,0	24,0	25,0	19,0
7125-10017	4EX6FBSPPX90	G 3/8" - 19 BSP	-04	53,0	25,0	28,0	22,0
7125-10018	6EX6FBSPPX90	G 3/8" - 19 BSP	-06	60,5	30,5	32,0	22,0
7125-10019	6EX8FBSPPX90	G 1/2" - 14 BSP	-06	65,0	35,0	35,0	27,0
7125-10020	8EX8FBSPPX90	G 1/2" - 14 BSP	-08	73,0	41,0	41,0	27,0
7125-10021	10EX10FBSPPX90	G 5/8" - 14 BSP	-10	80,5	46,0	46,0	28,0
7125-10022	12EX12FBSPPX90	G 3/4" - 14 BSP	-12	90,5	51,0	54,5	32,0
7125-10023	16EX16FBSPPX90	G 1" - 11 BSP	-16	125,0	71,5	69,5	38,0

 **Excellium™ Couplings**



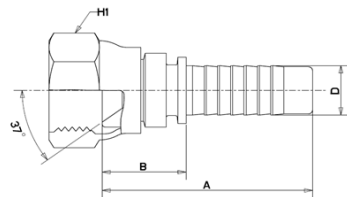
**Male BSP parallel. 60° Inverted cone. Straight.**

PROD NR	DESCRIPTION	THREAD	D	A	B	H
7125-10024	4EX4MBSPP	G 1/4" - 19 BSP	-04	53,5	25,5	19,0
7125-10025	4EX6MBSPP	G 3/8" - 19 BSP	-04	54,5	26,5	22,0
7125-10026	6EX6MBSPP	G 3/8" - 19 BSP	-06	57,0	27,0	22,0
7125-10027	6EX8MBSPP	G 1/2" - 14 BSP	-06	60,0	30,0	27,0
7125-10028	8EX8MBSPP	G 1/2" - 14 BSP	-08	62,5	30,5	27,0
7125-10029	10EX10MBSPP	G 5/8" - 14 BSP	-10	67,0	32,5	30,0
7125-10030	12EX12MBSPP	G 3/4" - 14 BSP	-12	74,0	34,5	32,0
7125-10031	16EX16MBSPP	G 1" - 11 BSP	-16	93,0	39,5	41,0



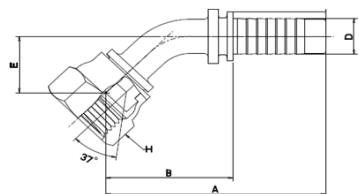
**BSP banjo.**

PROD NR	DESCRIPTION	THREAD	D	X	F	A	B
7125-10032	4EX4BSPBJ	1/4" - BSP	-04	1/4"	61,5	49,5	21,5
7125-10033	6EX6BSPBJ	3/8" - BSP	-06	3/8"	68,5	54,5	24,5
7125-10034	8EX8BSPBJ	1/2" - BSP	-08	1/2"	79,0	61,5	29,5



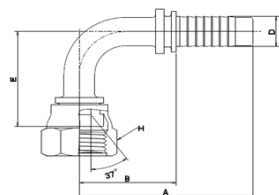
**Female JIC swivel. 37° Inverted cone. Straight.**

PROD NR	DESCRIPTION	THREAD	D	A	B	H
7125-10035	4EX4FJX	7/16" - 20 UNF	-04	41,5	13,5	15,0
7125-10036	4EX5FJX	1/2" - 20 UNF	-04	43,7	15,7	17,0
7125-10037	4EX6FJX	9/16" - 18 UNF	-04	43,7	15,7	19,0
7125-10038	6EX6FJX	9/16" - 18 UNF	-06	45,7	15,7	19,0
7125-10039	6EX8FJX	3/4" - 16 UNF	-06	48,5	18,5	24,0
7125-10040	6EX10FJX	7/8" - 14 UNF	-06	50,0	20,0	27,0
7125-10041	8EX8FJX	3/4" - 16 UNF	-08	51,0	19,0	24,0
7125-10042	8EX10FJX	7/8" - 14 UNF	-08	53,0	21,0	27,0
7125-10043	8EX12FJX	1.1/16" - 12 UN	-08	53,0	21,0	32,0
7125-10044	10EX10FJX	7/8" - 14 UNF	-10	55,5	21,0	27,0
7125-10045	10EX12FJX	1.1/16" - 12 UN	-10	55,5	21,0	32,0
7125-10046	12EX12FJX	1.1/16" - 12 UN	-12	61,1	21,6	32,0
7125-10047	12EX16FJX	1.5/16" - 12 UN	-12	62,7	23,2	38,0
7125-10048	16EX16FJX	1.5/16" - 12 UN	-16	77,7	24,2	38,0



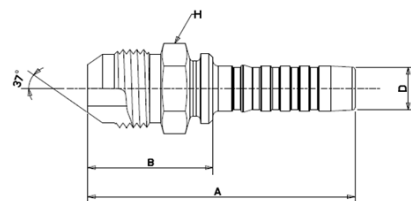
**Female JIC swivel. 37° Inverted cone. Swept elbow 45°S.**

PROD NR	DESCRIPTION	THREAD	D	A	B	E	H
7125-10049	4EX4FJX45S	7/16" - 20 UNF	-04	66,0	38,0	15,0	15,0
7125-10050	4EX5FJX45S	1/2" - 20 UNF	-04	68,0	40,0	17,0	17,0
7125-10051	4EX6FJX45S	9/16" - 18 UNF	-04	68,0	40,0	17,0	19,0
7125-10052	6EX6FJX45S	9/16" - 18 UNF	-06	83,0	53,0	18,0	19,0
7125-10053	6EX8FJX45S	3/4" - 16 UNF	-06	84,0	54,0	19,0	24,0
7125-10054	8EX8FJX45S	3/4" - 16 UNF	-08	94,0	62,0	20,0	24,0
7125-10055	8EX10FJX45S	7/8" - 14 UNF	-08	95,0	63,0	21,0	27,0
7125-10056	10EX10FJX45S	7/8" - 14 UNF	-08	94,5	60,0	22,0	27,0
7125-10057	10EX12FJX45S	1.1/16" - 12 UN	-10	97,5	63,0	25,0	32,0
7125-10058	12EX12FJX45S	1.1/16" - 12 UN	-12	101,5	62,0	29,0	32,0
7125-10059	16EX16FJX45S	1.5/16" - 12 UN	-16	142,0	88,5	39,5	38,0

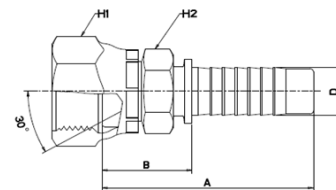


**Female JIC swivel. 37° Inverted cone. Swept elbow 90°S.**

PROD NR	DESCRIPTION	THREAD	D	A	B	E	H
7125-10060	4EX4FJX90S	7/16" - 20 UNF	-04	49,0	21,0	26,5	15,0
7125-10061	4EX5FJX90S	1/2" - 20 UNF	-04	59,0	31,0	29,5	17,0
7125-10062	4EX6FJX90S	9/16" - 18 UNF	-04	49,5	21,5	28,0	19,0
7125-10063	6EX6FJX90S	9/16" - 18 UNF	-06	60,5	30,5	33,5	19,0
7125-10064	6EX8FJX90S	3/4" - 16 UNF	-06	62,0	32,0	34,5	24,0
7125-10065	8EX8FJX90S	3/4" - 16 UNF	-08	72,5	40,5	43,0	24,0
7125-10066	8EX10FJX90S	7/8" - 14 UNF	-08	73,5	41,5	42,5	27,0
7125-10067	8EX12FJX90S	1.1/16" - 12 UN	-08	71,0	39,0	47,0	32,0
7125-10068	10EX10FJX90S	7/8" - 14 UNF	-10	78,5	44,0	47,0	27,0
7125-10069	10EX12FJX90S	1.1/16" - 12 UN	-10	81,5	47,0	48,0	32,0
7125-10070	12EX12FJX90S	1.1/16" - 12 UN	-12	89,5	50,0	50,0	32,0
7125-10071	16EX16FJX90S	1.5/16" - 12 UN	-16	122,0	68,5	70,0	38,0

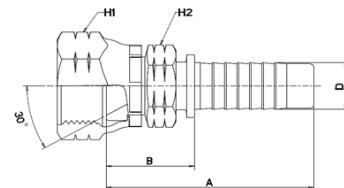

**Male JIC parallel. 37° Cone. Straight.**

PROD NR	DESCRIPTION	THREAD	D	A	B	H
7125-10072	4EX4MJ	7/16" - 20 UNF	-04	54,5	26,5	12,0
7125-10073	4EX5MJ	1/2" - 20 UNF	-04	55,5	27,5	14,0
7125-10074	4EX6MJ	9/16" - 18 UNF	-04	55,5	27,5	15,0
7125-10075	6EX6MJ	9/16" - 18 UNF	-06	58,0	28,0	15,0
7125-10076	6EX8MJ	3/4" - 16 UNF	-06	63,0	33,0	19,0
7125-10077	6EX10MJ	7/8" - 14 UNF	-06	66,0	36,0	24,0
7125-10078	8EX8MJ	3/4" - 16 UNF	-08	65,5	33,5	19,0
7125-10079	8EX10MJ	7/8" - 14 UNF	-08	68,5	36,5	24,0
7125-10080	8EX12MJ	1.1/16" - 12 UN	-08	70,5	38,5	27,0
7125-10081	10EX10MJ	7/8" - 14 UNF	-10	71,0	36,5	24,0
7125-10082	10EX12MJ	1.1/16" - 12 UN	-10	73,0	38,5	27,0
7125-10083	12EX12MJ	1.1/16" - 12 UN	-12	79,0	39,5	27,0
7125-10084	16EX16MJ	1.5/16" - 12 UN	-16	97,0	43,5	34,0



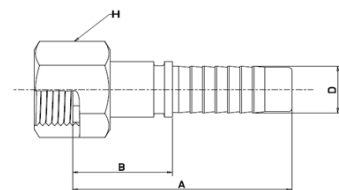
**Female Japanese BSP swivel. 30° Inverted cone. Straight.**

PROD NR	DESCRIPTION	THREAD	D	A	B	H1	H 2
7125-10085	4EX4FJISX	G 1/2" - 14 BSP	-04	51,0	23,0	19,0	17,0
7125-10086	6EX6FJISX	G 3/8" - 19 BSP	-06	54,0	24,0	22,0	19,0
7125-10087	8EX8FJISX	G 1/2" - 14 BSP	-08	60,0	28,0	27,0	22,0
7125-10088	12EX12FJISX	G 3/4" - 14 BSP	-12	70,5	30,5	32,0	27,0



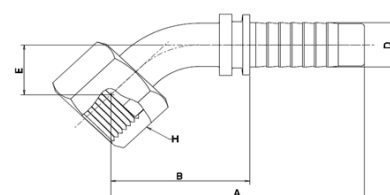
**Female Japanese DIN swivel. 30° Inverted cone. Straight.**

PROD NR	DESCRIPTION	THREAD	D	A	B	H1	H 2
7125-10089	4EX4FKX	M14 x 1.5	-04	52,2	24,2	19,0	17,0
7125-10090	6EX6FKX	M18 x 1.5	-06	56,0	26,0	24,0	24,0
7125-10091	8EX8FKX	M22 x 1.5	-08	61,0	29,0	27,0	27,0
7125-10092	10EX10FKX	M24 x 1.5	-10	67,0	32,5	32,0	32,0
7125-10093	12EX12FKX	M30 x 1.5	-12	73,0	32,5	36,0	36,0



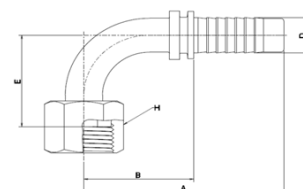
**Female SAE swivel. Flat face. Straight.**

PROD NR	DESCRIPTION	THREAD	D	A	B	H
7125-10094	4EX4FFORX	9/16" - 18 UNF	-04	49,5	21,5	17,0
7125-10095	4EX6FFORX	11/16" - 16 UN	-04	51,0	23,0	22,0
7125-10096	6EX6FFORX	11/16" - 16 UN	-06	53,0	23,0	22,0
7125-10097	6EX8FFORX	13/16" - 16 UN	-06	56,0	26,0	24,0
7125-10098	8EX8FFORX	13/16" - 16 UN	-08	57,5	25,5	24,0
7125-10099	8EX10FFORX	1" - 14 UNS	-08	61,5	29,5	30,0
7125-10100	10EX10FFORX	1" - 14 UNS	-08	64,0	29,5	30,0
7125-10101	12EX12FFORX	1.3/16" - 12 UN	-10	72,5	33,0	36,0
7125-10102	12EX16FFORX	1.7/16" - 12 UN	-12	73,5	34,0	41,0
7125-10103	16EX16FFORX	1.7/16" - 12 UN	-16	88,5	35,0	41,0



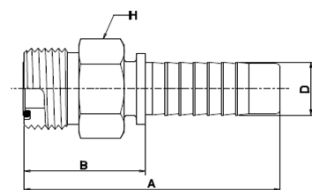
**Female SAE swivel. Flat face. Swept elbow 45°S.**

PROD NR	DESCRIPTION	THREAD	D	A	B	E	H
7125-10104	4EX4FFORX45S	9/16" - 18 UNF	-04	73,0	45,0	15,0	17,0
7125-10105	4EX6FFORX45S	11/16" - 16 UN	-04	73,0	45,0	15,0	22,0
7125-10106	6EX6FFORX45S	11/16" - 16 UN	-06	81,0	51,0	13,0	22,0
7125-10107	6EX8FFORX45S	13/16" - 16 UN	-06	82,0	52,0	17,0	24,0
7125-10108	8EX8FFORX45S	13/16" - 16 UN	-08	90,0	58,0	18,0	24,0
7125-10109	8EX10FFORX45S	1" - 14 UNS	-08	93,0	61,0	20,0	30,0
7125-10110	10EX10FFORX45S	1" - 14 UNS	-10	89,5	55,0	20,0	30,0
7125-10111	12EX12FFORX45S	1.3/16" - 12 UN	-12	97,5	58,0	23,0	36,0
7125-10112	16EX16FFORX45S	1.7/16" - 12 UN	-16	134,5	81,0	26,0	41,0

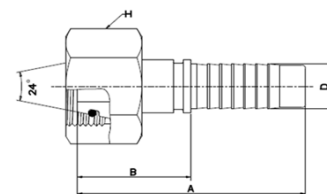


**Female SAE swivel. Flat face. Swept elbow 90°S.**

PROD NR	DESCRIPTION	INTERNATIONAL THREAD	D	A	B	E	H
7125-10113	4EX4FFORX90S	9/16" - 18 UNF	-04	51,5	23,5	26,5	17,0
7125-10114	4EX6FFORX90S	11/16" - 16 UN	-04	57,0	29,0	27,0	22,0
7125-10115	6EX6FFORX90S	11/16" - 16 UN	-06	60,0	30,0	31,0	22,0
7125-10116	6EX8FFORX90S	13/16" - 16 UN	-06	63,0	33,0	31,0	24,0
7125-10117	8EX8FFORX90S	13/16" - 16 UN	-08	71,0	39,0	37,0	24,0
7125-10118	8EX10FFORX90S	1" - 14 UNS	-08	73,0	41,0	38,0	30,0
7125-10119	10EX10FFORX90S	1" - 14 UNS	-10	80,5	46,0	38,0	30,0
7125-10120	12EX12FFORX90S	1.3/16" - 12 UN	-12	93,5	54,0	49,5	36,0
7125-10121	16EX16FFORX90S	1.7/16" - 12 UN	-16	117,5	64,0	61,0	41,0

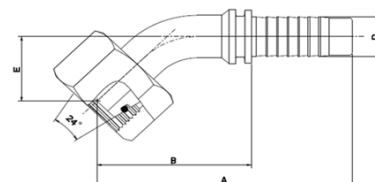

**Male SAE O-ring parallel. Flat face. Straight.**

PROD NR	DESCRIPTION	THREAD	D	A	B	H
7125-10122	4EX4MFFOR	9/16" - 18 UNF	-04	52,0	24,0	17,0
7125-10123	6EX6MFFOR	11/16" - 16 UN	-06	57,5	27,5	19,0
7125-10124	8EX8MFFOR	13/16" - 16 UN	-08	61,0	29,0	22,0
7125-10125	10EX10MFFOR	1" - 14 UNS	-10	68,5	34,0	27,0
7125-10126	12EX12MFFOR	1.3/16" - 12 UN	-12	77,5	38,0	32,0
7125-10127	16EX16MFFOR	1.7/16" - 12 UN	-16	93,0	39,5	71,0



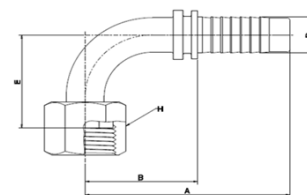
**Female DIN O-ring swivel. 24° cone. Light series. Straight.**

PROD NR	DESCRIPTION	THREAD	D	A	B	H
7125-10131	4EX6FDLORX	M12 x 1.5	-04	47,7	19,7	14,0
7125-10132	4EX8FDLORX	M14 x 1.5	-04	53,8	25,8	17,0
7125-10133	4EX10FDLORX	M16 x 1.5	-04	54,0	26,0	19,0
7125-10134	4EX12FDLORX	M18 x 1.5	-04	54,5	26,5	22,0
7125-10257	5EX10FDLORX	M16 x 1.5	-05	54,0	26,0	19,0
7125-10261	5EX12FDLORX	M18 x 1.5	-05	54,5	26,5	22,0
7125-10135	6EX10FDLORX	M16 x 1.5	-06	56,5	26,5	19,0
7125-10136	6EX12FDLORX	M18 x 1.5	-06	56,5	26,5	22,0
7125-10137	6EX15FDLORX	M22 x 1.5	-06	57,0	27,0	27,0
7125-10138	8EX15FDLORX	M22 x 1.5	-08	60,1	28,1	22,0
7125-10139	8EX18FDLORX	M26 x 1.5	-08	60,3	28,3	32,0
7125-10140	10EX18FDLORX	M26 x 1.5	-10	62,8	28,3	32,0
7125-10141	12EX22FDLORX	M30 x 2.0	-12	70,6	31,1	36,0
7125-10142	16EX28FDLORX	M36 x 2.0	-16	86,2	32,7	41,0



**Female DIN O-ring swivel. 24° cone. Light series. Swept elbow 45°.**

PROD NR	DESCRIPTION	THREAD	D	A	B	E	H
7125-10143	4EX6FDLORX45	M12 x 1.5	-04	68,0	40,0	17,0	17,0
7125-10144	4EX8FDLORX45	M14 x 1.5	-04	73,0	45,0	17,0	17,0
7125-10145	4EX10FDLORX45	M16 x 1.5	-04	76,5	48,5	17,0	19,0
7125-10146	4EX12FDLORX45	M18 x 1.5	-04	76,5	48,5	17,0	22,0
7125-10258	5EX10FDLORX45	M16 x 1.5	-05	80,5	52,5	17,0	19,0
7125-10262	5EX12FDLORX45	M18 x 1.5	-05	78,0	50,0	20,0	22,0
7125-10147	6EX10FDLORX45	M16 x 1.5	-06	85,0	55,0	20,0	19,0
7125-10148	6EX12FDLORX45	M18 x 1.5	-06	87,0	57,0	17,0	22,0
7125-10149	6EX15FDLORX45	M22 x 1.5	-06	89,0	59,0	19,0	27,0
7125-10150	8EX15FDLORX45	M22 x 1.5	-08	96,0	64,0	22,0	27,0
7125-10151	8EX18FDLORX45	M26 x 1.5	-08	97,0	65,0	26,0	32,0
7125-10152	10EX18FDLORX45	M26 x 1.5	-10	96,0	61,5	28,0	32,0
7125-10153	12EX22FDLORX45	M30 x 2.0	-12	102,5	63,0	27,0	36,0
7125-10154	16EX28FDLORX45	M36 x 2.0	-16	139,0	85,5	38,5	41,0

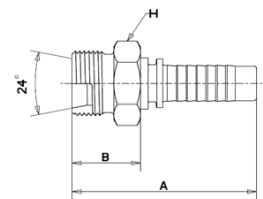


**Female DIN O-ring swivel. 24° cone. Light series. Swept elbow 90°.**

PROD NR	DESCRIPTION	THREAD	D	A	B	E	H
7125-10155	4EX6FDLORX90	M12 x 1.5	-04	51,5	23,5	31,0	17,0
7125-10156	4EX8FDLORX90	M14 x 1.5	-04	53,5	25,5	31,5	17,0
7125-10157	4EX10FDLORX90	M16 x 1.5	-04	57,0	29,0	29,0	19,0
7125-10158	4EX12FDLORX90	M18 x 1.5	-04	57,0	29,0	33,0	22,0
7125-10259	5EX10FDLORX90	M16 x 1.5	-05	56,5	28,5	32,0	19,0
7125-10263	5EX12FDLORX90	M18 x 1.5	-05	56,5	28,5	33,0	22,0
7125-10159	6EX10FDLORX90	M16 x 1.5	-06	63,5	33,5	33,5	19,0
7125-10160	6EX12FDLORX90	M18 x 1.5	-06	63,5	33,5	33,5	22,0
7125-10161	6EX15FDLORX90	M22 x 1.5	-06	60,5	30,5	38,0	27,0
7125-10162	8EX15FDLORX90	M22 x 1.5	-08	73,0	41,0	43,0	27,0
7125-10163	8EX18FDLORX90	M26 x 1.5	-08	74,5	42,5	43,0	32,0
7125-10164	10EX18FDLORX90	M26 x 1.5	-10	80,5	46,0	46,0	32,0
7125-10165	12EX22FDLORX90	M30 x 2.0	-12	89,5	50,0	52,5	36,0
7125-10166	16EX28FDLORX90	M36 x 2.0	-16	120,5	67,0	65,0	41,0

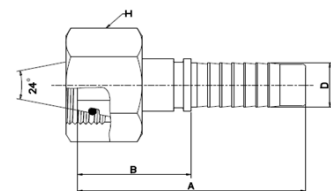


 **Excellium™ Couplings**



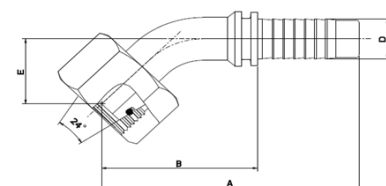
**Male DIN parallel. 24° cone. Light series. Straight.**

PROD NR	DESCRIPTION	THREAD	D	A	B	H
7125-10167	4EX6MDL	M12 x 1.5	-04	50,5	22,5	14,0
7125-10168	4EX8MDL	M14 x 1.5	-04	50,5	22,5	14,0
7125-10169	4EX10MDL	M16 x 1.5	-04	53,0	25,0	17,0
7125-10170	4EX12MDL	M18 x 1.5	-04	53,5	25,5	19,0
7125-10260	5EX10MDL	M16 x 1.5	-05	53,0	25,0	17,0
7125-10264	5EX12MDL	M18 x 1.5	-05	54,0	26,0	19,0
7125-10171	6EX10MDL	M16 x 1.5	-06	54,0	24,0	17,0
7125-10172	6EX12MDL	M18 x 1.5	-06	56,0	26,0	19,0
7125-10173	6EX15MDL	M22 x 1.5	-06	57,0	27,0	22,0
7125-10174	8EX15MDL	M22 x 1.5	-08	59,5	27,5	22,0
7125-10175	8EX18MDL	M26 x 1.5	-08	60,0	28,0	27,0
7125-10176	10EX18MDL	M26 x 1.5	-10	63,0	28,5	27,0
7125-10177	12EX18MDL	M26 x 1.5	-12	63,0	28,5	27,0
7125-10178	12EX22MDL	M30 x 2.0	-12	72,0	32,5	30,0
7125-10179	16EX28MDL	M36 x 2.0	-16	88,0	34,5	36,0



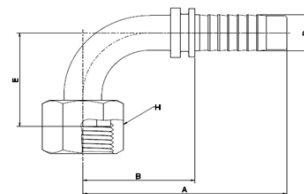
**Female DIN O-ring swivel. 24° cone. Heavy series. Straight.**

PROD NR	DESCRIPTION	THREAD	D	L	A	H
7125-10180	4EX6FDHORX	M14 x 1.5	-04	53,7	25,7	17,0
7125-10181	4EX8FDHORX	M16 x 1.5	-04	53,8	25,8	19,0
7125-10182	4EX10FDHORX	M18 x 1.5	-04	54,0	26,0	22,0
7125-10265	5EX12FDHORX	M20 x 1.5	-05	54,4	26,5	24,0
7125-10183	6EX10FDHORX	M18 x 1.5	-06	56,5	26,5	22,0
7125-10184	6EX12FDHORX	M20 x 1.5	-06	56,5	26,5	24,0
7125-10185	6EX14FDHORX	M22 x 1.5	-06	59,5	29,5	27,0
7125-10186	8EX14FDHORX	M22 x 1.5	-08	60,0	28,0	27,0
7125-10187	8EX16FDHORX	M24 x 1.5	-08	63,0	31,0	30,0
7125-10188	10EX20FDHORX	M30 x 2.0	-10	71,0	36,5	36,0
7125-10189	12EX20FDHORX	M30 x 2.0	-12	75,5	36,0	36,0
7125-10190	12EX25FDHORX	M36 x 2.0	-12	77,6	38,1	46,0
7125-10191	16EX25FDHORX	M36 x 2.0	-16	93,0	39,5	46,0
7125-10192	16EX30FDHORX	M42 x 2.0	-16	95,1	41,6	50,0

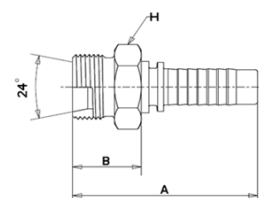


**Female DIN O-ring swivel. 24° cone. Heavy series. Swept elbow 45°.**

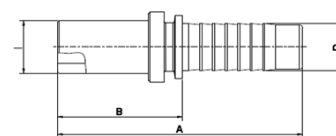
PROD NR	DESCRIPTION	THREAD	D	A	B	E	H
7125-10193	4EX8FDHORX45	M16 x 1.5	-04	78,0	50,0	17,0	19,0
7125-10194	4EX10FDHORX45	M18 x 1.5	-04	76,5	48,5	17,0	22,0
7125-10266	5EX12FDHORX45	M20 x 1.5	-05	78,0	50,0	20,0	24,0
7125-10195	6EX10FDHORX45	M18 x 1.5	-06	87,0	57,0	17,0	22,0
7125-10196	6EX12FDHORX45	M20 x 1.5	-06	87,0	57,0	17,0	24,0
7125-10197	6EX14FDHORX45	M22 x 1.5	-06	87,0	59,0	19,0	27,0
7125-10199	8EX16FDHORX45	M24 x 1.5	-08	98,5	66,5	22,0	30,0
7125-10200	10EX20FDHORX45	M30 x 2.0	-10	99,0	64,5	26,0	36,0
7125-10201	12EX20FDHORX45	M30 x 2.0	-12	103,5	64,0	27,0	36,0
7125-10202	12EX25FDHORX45	M36 x 2.0	-12	109,5	70,0	28,0	46,0
7125-10203	16EX25FDHORX45	M36 x 2.0	-16	142,0	88,5	38,0	46,0
7125-10204	16EX30FDHORX45	M42 x 2.0	-16	142,5	89,0	38,0	50,0


**Female DIN O-ring swivel. 24° cone. Heavy series. Swept elbow 90°.**

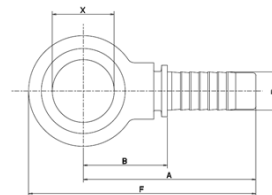
PROD NR	DESCRIPTION	THREAD	D	A	B	E	H
7125-10206	4EX8FDHORX90	M16 x 1.5	-04	53,5	25,5	31,0	19,0
7125-10207	4EX10FDHORX90	M18 x 1.5	-04	57,0	29,0	29,0	22,0
7125-10267	5EX12FDHORX90	M20 x 1.5	-05	56,5	28,5	33,0	24,0
7125-10208	6EX10FDHORX90	M18 x 1.5	-06	63,5	33,5	33,5	22,0
7125-10209	6EX12FDHORX90	M20 x 1.5	-06	63,5	33,5	33,5	24,0
7125-10210	6EX14FDHORX90	M22 x 1.5	-06	63,5	33,5	42,0	27,0
7125-10211	8EX16FDHORX90	M24 x 1.5	-08	73,0	41,0	43,0	30,0
7125-10212	10EX20FDHORX90	M30 x 2.0	-10	82,5	48,0	48,0	36,0
7125-10213	12EX20FDHORX90	M30 x 2.0	-12	89,5	50,0	28,0	36,0
7125-10214	12EX25FDHORX90	M36 x 2.0	-12	89,5	50,0	58,0	46,0
7125-10215	16EX25FDHORX90	M36 x 2.0	-16	126,5	73,0	70,0	46,0
7125-10216	16EX30FDHORX90	M42 x 2.0	-16	126,5	73,0	70,0	50,0


**Male DIN parallel. 24° cone. Heavy series. Straight.**

PROD NR	DESCRIPTION	THREAD	D	A	B	H
7125-10217	4EX8MDH	M16 x 1.5	-04	53,5	25,5	17,0
7125-10218	4EX10MDH	M18 x 1.5	-04	54,5	26,5	19,0
7125-10268	5EX12MDH	M20 x 1.5	-05	55,0	27,0	22,0
7125-10219	6EX10MDH	M18 x 1.5	-06	57,0	27,0	19,0
7125-10220	6EX12MDH	M20 x 1.5	-06	57,0	27,0	22,0
7125-10221	6EX14MDH	M22 x 1.5	-06	59,0	29,0	22,0
7125-10222	8EX16MDH	M24 x 1.5	-08	62,5	30,5	24,0
7125-10223	10EX20MDH	M30 x 2.0	-10	68,0	33,5	30,0
7125-10224	12EX20MDH	M30 x 2.0	-12	73,5	34,0	30,0
7125-10225	12EX25MDH	M36 x 2.0	-12	77,2	37,7	36,0
7125-10226	16EX25MDH	M36 x 2.0	-16	92,0	38,5	36,0
7125-10227	16EX30MDH	M42 x 2.0	-16	94,0	40,5	46,0

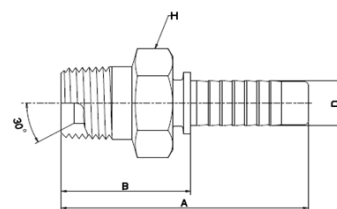

**Metric Stand Pipe**

PROD NR	DESCRIPTION	THREAD	D	A	B	I
7125-10228	4EX6MSP	L6	-04	56,5	28,5	6,0
7125-10229	4EX8MSP	L8	-04	56,5	28,5	8,0
7125-10230	6EX10MSP	L10	-06	60,0	30,0	10,0
7125-10231	6EX12MSP	L12	-06	60,0	30,0	12,0
7125-10232	8EX15MSP	L15	-08	64,5	32,5	15,0
7125-10233	10EX18MSP	L18	-10	68,0	33,5	18,0
7125-10234	12EX22MSP	L22	-12	76,0	36,5	22,0



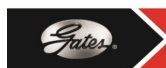
### Metric banjo.

PROD NR	DESCRIPTION	THREAD	D	X	F	A	B
7125-10235	4EX10DBJ	M10	-04	M10	59,0	50,5	22,5
7125-10236	4EX12DBJ	M12	-04	M12	57,7	47,5	19,5
7125-10237	4EX14DBJ	M14	-04	M14	61,5	49,5	21,5
7125-10238	6EX14DBJ	M14	-06	M14	70,0	58,0	28,0
7125-10239	6EX16DBJ	M16	-06	M16	68,5	54,5	24,5
7125-10240	6EX18DBJ	M18	-06	M18	73,5	57,5	27,5
7125-10241	8EX18DBJ	M18	-08	M18	76,0	60,0	28,0
7125-10242	8EX22DBJ	M22	-08	M22	79,5	62,0	30,0

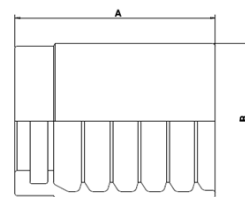


### Male NPTF parallel. Straight.

PROD NR	DESCRIPTION	THREAD	D	A	B	H
7125-10243	4EX4MP	1/4" - 18 NPTF	-04	54,5	26,5	15,0
7125-10244	4EX6MP	3/8" - 18 NPTF	-04	55,5	27,5	19,0
7125-10245	6EX6MP	3/8" - 18 NPTF	-06	58,0	28,0	19,0
7125-10246	6EX8MP	1/2" - 14 NPTF	-06	64,0	34,0	22,0
7125-10247	8EX8MP	1/2" - 14 NPTF	-08	66,5	34,5	22,0
7125-10248	12EX12MP	3/4" - 14 NPTF	-12	76,0	36,5	27,0
7125-10249	16EX16MP	1" - 11.5 NPTF	-16	97,0	43,5	36,0



# Excellium™ Couplings



## No-skive Ferrule

PROD NR	DESCRIPTION	A	B
7125-10250	4EX1F-1	28,0	23,0
7125-10256	5EX1F-1	29,0	24,0
7125-10251	6EX1F-1	31,5	26,0
7125-10252	8EX1F-1	33,5	29,0
7125-10253	10EX1F-1	35,5	33,0
7125-10254	12EX1F-1	41,0	37,0
7125-10255	16EX1F-1	50,5	46,0